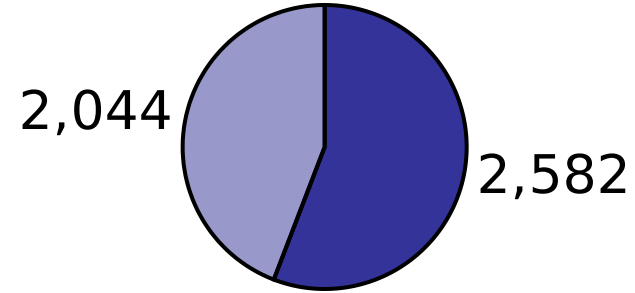


### Item Library

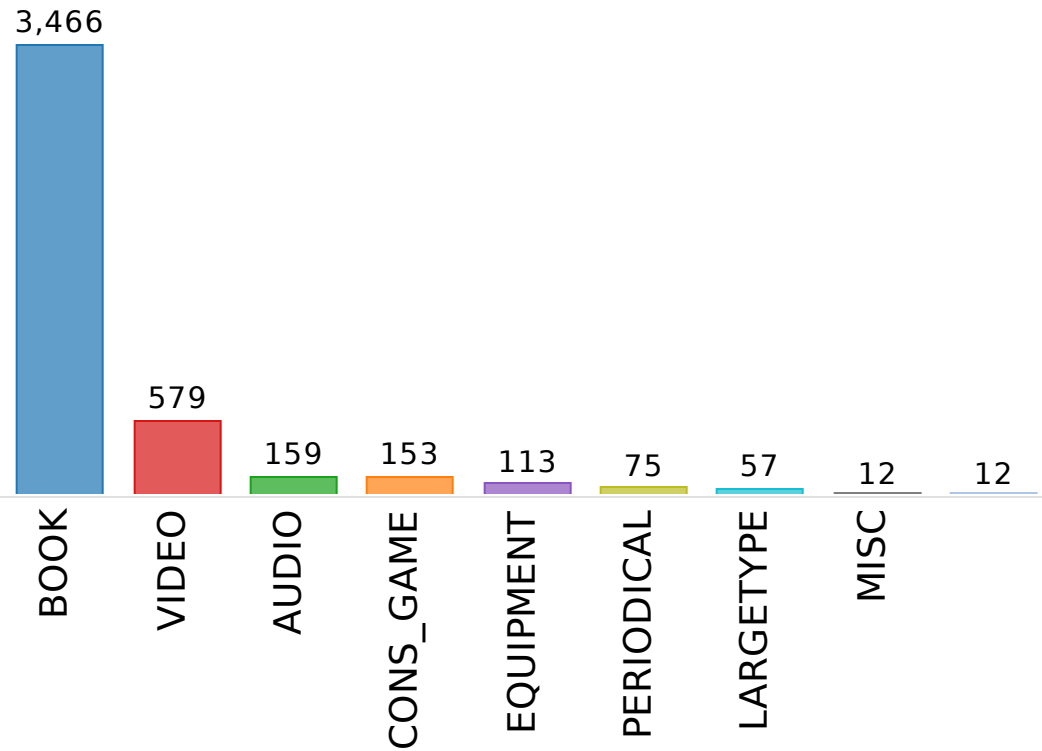
NRS

#### Checkouts & Renewals of Your Items

Trans Stat Command Desc	Transactions	% of Total
<b>Total</b>	<b>4,626</b>	<b>100.00%</b>
Charge Item Part B	2,582	55.81%
Renew Item	2,044	44.19%



Item Cat1	Transactions	% of Total
<b>Total</b>	<b>4,626</b>	<b>100.00%</b>
BOOK	3,466	74.92%
VIDEO	579	12.52%
AUDIO	159	3.44%
CONS_GAME	153	3.31%
EQUIPMENT	113	2.44%
PERIODICAL	75	1.62%
LARGETYPE	57	1.23%
MISC	12	0.26%
	12	0.26%



### Item Library

NRS

#### Checkouts & Renewals of Your Items

Item Type	Transactions	% of Total
<b>Total</b>	<b>4,626</b>	<b>100.00%</b>
BOOK	3,208	69.35%
DVD_FEAT	417	9.01%
BOOK_NEW	327	7.07%
CONSOLEGAM	143	3.09%
PERIODICAL	76	1.64%
DVD_BOXSET	73	1.58%
TOY	55	1.19%
CD_AUDIO	54	1.17%
LARGETYPE	42	0.91%
DVD_NEWFEA	34	0.73%
EQUIPMENT	34	0.73%
CD_SPOKEN	30	0.65%
BLURAY_FEA	25	0.54%
DVD	22	0.48%
EQUIPMENTC	19	0.41%
LARGETYPEN	15	0.32%
MISC_NONPR	15	0.32%
CONSOLENEW	12	0.26%
NS_ILL_PRT	6	0.13%
BLURAY_NFE	5	0.11%
CD_SPOKNEW	4	0.09%
DVD_BOXNEW	4	0.09%
CD_NEW	2	0.04%
NS_ILL_VID	2	0.04%
BLURAY_BOX	1	0.02%
KIT	1	0.02%

Item Home Location	Transactions	% of Total
<b>Total</b>	<b>4,626</b>	<b>100.00%</b>
STACKS_JUV	2,462	53.22%
STACKS	1,489	32.19%
NEW_ADULT	276	5.97%
YOUNGADULT	261	5.64%
NEW_JUV	108	2.33%
NEW_YA	19	0.41%
ILL_IN	8	0.17%
ASK_STAFF	2	0.04%
RB_ILL	1	0.02%

### Item Library

NRS

#### Checkouts & Renewals of Your Items

User Library	Trans Stat User Profile Name	Transactions	% of Total
<b>Total</b>		<b>4,626</b>	<b>100.00%</b>
<b>NRS</b>	<b>NRS_ADULT</b>	2,065	44.64%
	<b>NRS_JUV</b>	633	13.68%
<b>RSS</b>	<b>RSS_ADULT</b>	401	8.67%
<b>OPS</b>	<b>OPS_PATRON</b>	142	3.07%
<b>BYS</b>	<b>BYS_ADULT</b>	103	2.23%
<b>BFS</b>	<b>BFS_PATRON</b>	54	1.17%
<b>WVD</b>	<b>WVD_PATRON</b>	51	1.10%
<b>FPS</b>	<b>FPS_ADULT</b>	49	1.06%
<b>GED</b>	<b>GED_PATRON</b>	48	1.04%
<b>OZS</b>	<b>OPS_PATRON</b>	48	1.04%
<b>DGS</b>	<b>DGS_PATRON</b>	41	0.89%
<b>SCD</b>	<b>SCD_PATRON</b>	39	0.84%
<b>BYS</b>	<b>BYS_JUV</b>	34	0.73%
<b>CIS</b>	<b>CIS_ADULT</b>	33	0.71%
<b>SFS</b>	<b>SFS_ADULT</b>	33	0.71%
<b>BRS</b>	<b>BRS_ADULT</b>	31	0.67%
<b>BLD</b>	<b>BLD_PATRON</b>	30	0.65%
<b>GVD</b>	<b>GVD_PATRON</b>	29	0.63%
<b>ILL_LIBS</b>	<b>CHICAGO_P</b>	28	0.61%
<b>INS</b>	<b>INS_PATRON</b>	28	0.61%
<b>WCS</b>	<b>WCS_PATRON</b>	27	0.58%
<b>WMS</b>	<b>WMS_PATRON</b>	27	0.58%
<b>LPS</b>	<b>LPS_PATRON</b>	26	0.56%
<b>TFS</b>	<b>TFS_PATRON</b>	25	0.54%
<b>GHS</b>	<b>GHS_PATRON</b>	22	0.48%
<b>TPS</b>	<b>TPS_PATRON</b>	22	0.48%
<b>ERS</b>	<b>ERS_JUV</b>	20	0.43%

### Item Library

NRS

### Checkouts & Renewals of Your Items

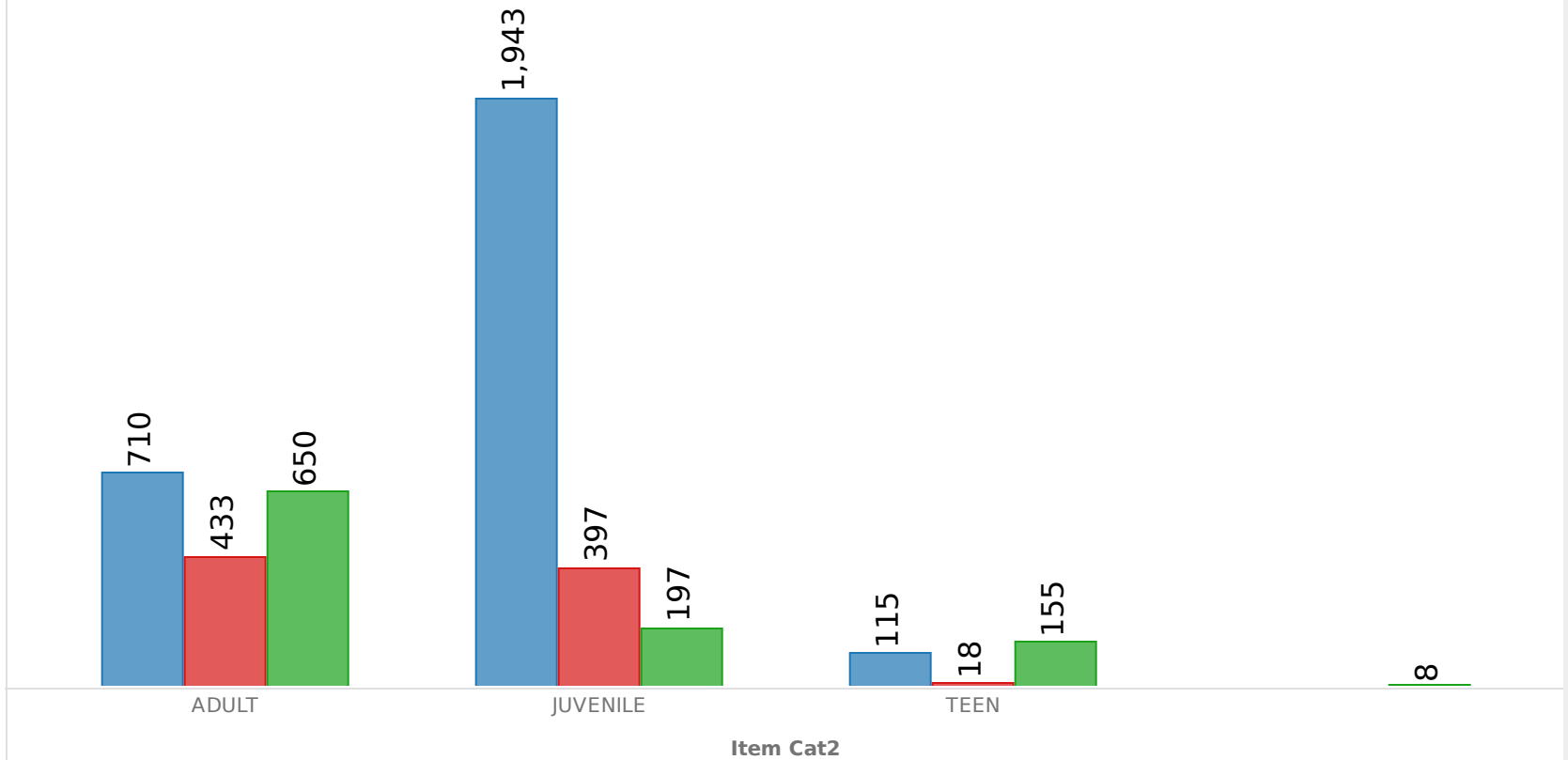
Item Cat2	Transactions	% of Total
ADULT	1,793	38.76%
JUVENILE	2,537	54.84%
TEEN	288	6.23%
	8	0.17%
<b>Total</b>	<b>4,626</b>	<b>100.00%</b>

Item Cat3	Transactions	% of Total
FICTION	2,768	59.84%
NONFICTION	848	18.33%
	1,010	21.83%
<b>Total</b>	<b>4,626</b>	<b>100.00%</b>

### Circs by Cat2 & Cat3

Item Cat3

- FICTION
- NONFICTION
- 

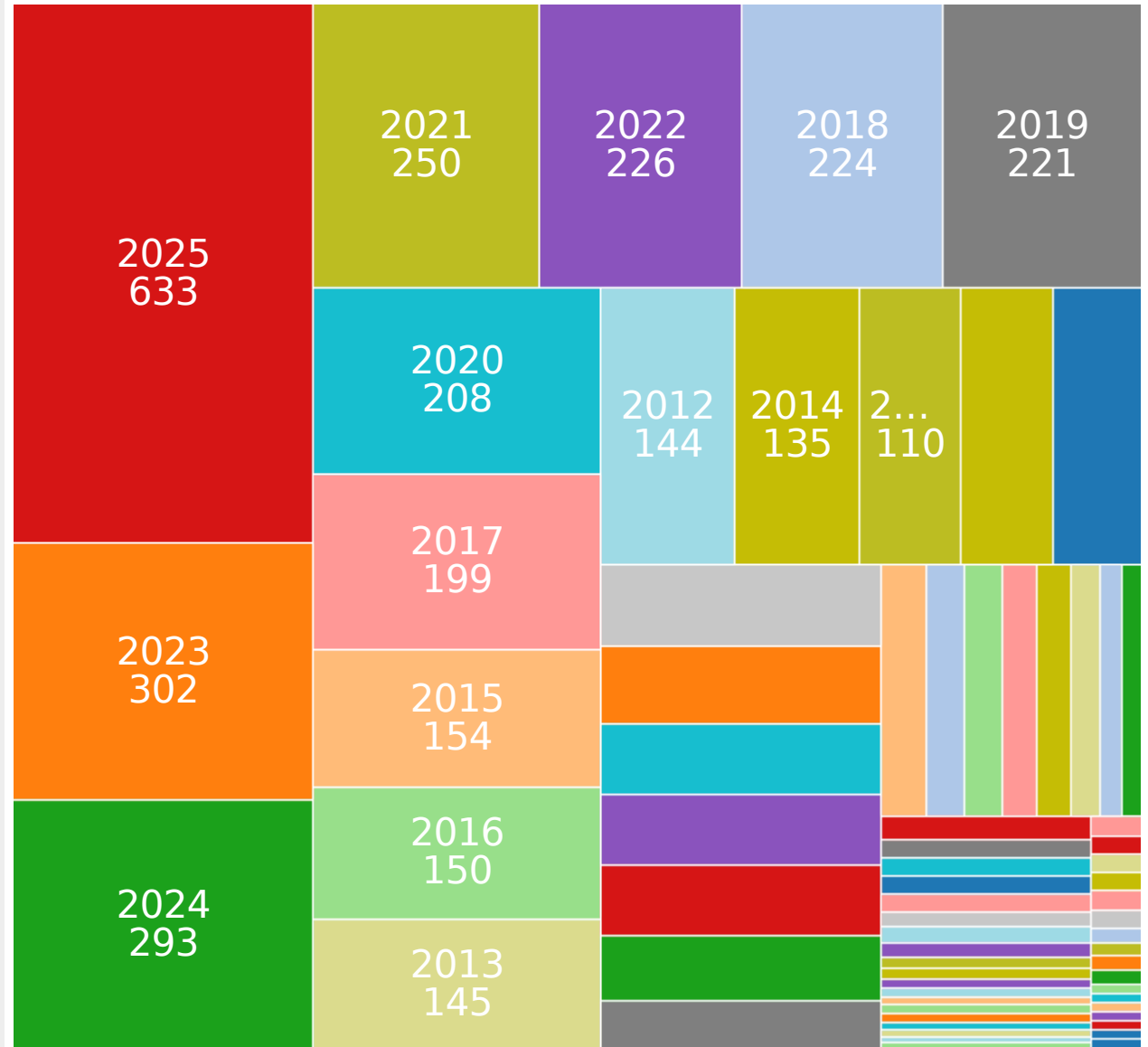


### Item Library

NRS

### Checkouts & Renewals of Your Items

Publication Year	Transactions	% of Total
<b>Total</b>	<b>4,626</b>	<b>100.00%</b>
2025	633	13.68%
2023	302	6.53%
2024	293	6.33%
2021	250	5.40%
2022	226	4.89%
2018	224	4.84%
2019	221	4.78%
2020	208	4.50%
2017	199	4.30%
2015	154	3.33%
2016	150	3.24%
2013	145	3.13%
2012	144	3.11%
2014	135	2.92%
2005	110	2.38%
0	101	2.18%
2010	95	2.05%
2011	88	1.90%
2007	86	1.86%
2004	78	1.69%
2006	77	1.66%
2009	77	1.66%
2008	72	1.56%
2003	53	1.15%
1999	43	0.93%
2002	38	0.82%
2000	37	0.80%
2001	35	0.76%
1998	34	0.73%



### Station Library

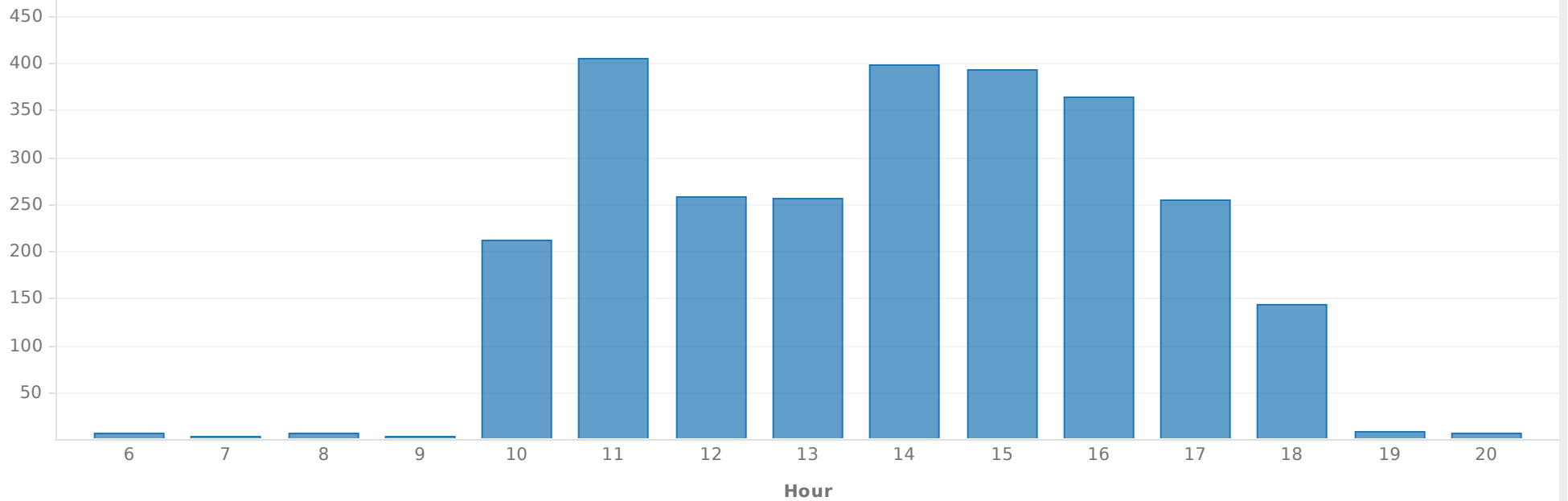
NRS

#### Checkouts & Renewals at Your Library

Trans Stat Command Desc	Transactions	% of Total
<b>Total</b>	<b>4,595</b>	<b>100.00%</b>
Charge Item Part B	2,478	53.93%
Renew Item	2,117	46.07%

Trans Stat Station Login User Access	Transactions	% of Total
<b>Total</b>	<b>4,595</b>	<b>100.00%</b>
AUTORENEW	1,876	40.83%
NRSCIRCSR	1,736	37.78%
SIPCHK	666	14.49%
NRSTECHSR	286	6.22%
PUBLIC	31	0.67%

#### Average Transactions per Hour



### Station Library

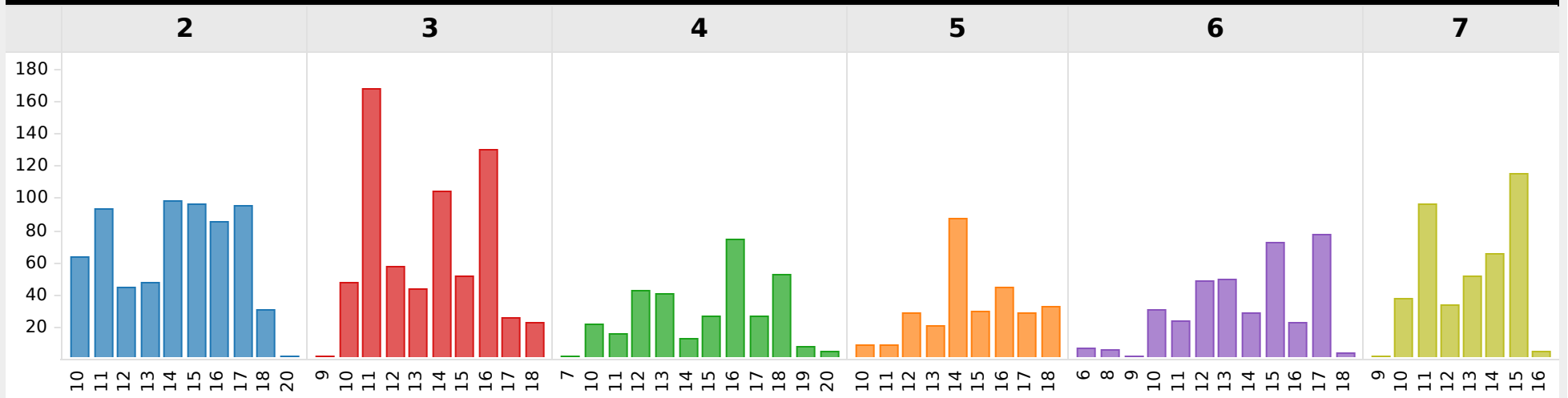
NRS

### Checkouts & Renewals at Your Library

Trans Stat Dow	Transactions	% of Total
Monday	658	24.20%
Tuesday	655	24.09%
Wednesday	331	12.17%
Thursday	293	10.78%
Friday	375	13.79%
Saturday	407	14.97%

Hour	Transactions	% of Total
7	1	0.04%
8	6	0.22%
9	4	0.15%
10	212	7.82%
11	406	14.97%
12	258	9.51%
13	256	9.44%
14	398	14.68%
15	393	14.49%
16	364	13.42%
17	255	9.40%
18	144	5.31%
19	8	0.29%
20	7	0.26%

### Circs by Hour and Day



### Station Library

NRS

### Checkouts & Renewals at Your Library

#### Library Users at Your Library

User Library	Transactions	% of Total
<b>Total</b>	<b>2,719</b>	<b>100.00%</b>
NRS	2,088	76.79%
RSS	269	9.89%
BYS	84	3.09%
OPS	67	2.46%
FPS	36	1.32%
OZS	31	1.14%
CIS	22	0.81%
SFS	18	0.66%
BFS	16	0.59%
GHS	14	0.51%
ILL_LIBS	11	0.40%
LYS	11	0.40%
EPS	10	0.37%
BRS	9	0.33%
WCS	9	0.33%
LPS	8	0.29%
HSS	5	0.18%
TFS	5	0.18%
INS	2	0.07%
NLS	2	0.07%
BWS	1	0.04%
RFS	1	0.04%

#### Library Items at Your Library

Item Library	Transactions	% of Total
<b>Total</b>	<b>2,719</b>	<b>100.00%</b>
NRS	2,222	81.72%
BDD	21	0.77%
SCD	21	0.77%
INS	16	0.59%
OPS	15	0.55%
ESS	14	0.51%
WRS	14	0.51%
OLS	13	0.48%
ADD	12	0.44%
BKS	12	0.44%
BYS	10	0.37%
DGS	10	0.37%
FMS	10	0.37%
GED	10	0.37%
TFS	10	0.37%
TPS	10	0.37%
WVD	10	0.37%
BFS	9	0.33%
GSD	9	0.33%
MED	9	0.33%
VPD	9	0.33%
EVS	8	0.29%

### Station Library

NRS

#### Checkouts & Renewals by Library & User Profile at Your Library

##### Library Users/Profiles at Your Library

User Library	Trans Stat User Profile Name	Transactions	% of Total
<b>Total</b>		<b>2,719</b>	<b>100.00%</b>
NRS	NRS_ADULT	1,675	61.60%
	NRS_JUV	407	14.97%
RSS	RSS_ADULT	264	9.71%
OPS	OPS_PATRON	67	2.46%
BYS	BYS_ADULT	66	2.43%
FPS	FPS_ADULT	36	1.32%
OZS	OPS_PATRON	31	1.14%
BYS	BYS_JUV	18	0.66%
SFS	SFS_ADULT	18	0.66%
BFS	BFS_PATRON	16	0.59%
GHS	GHS_PATRON	14	0.51%
CIS	CIS_ADULT	13	0.48%
ILL_LIBS	CHICAGO_P	11	0.40%
LYS	LYS_ADULT	11	0.40%
EPS	EPS_PATRON	10	0.37%
BRS	BRS_ADULT	9	0.33%
CIS	CIS_JUV	9	0.33%
WCS	WCS_PATRON	9	0.33%
LPS	LPS_PATRON	8	0.29%
HSS	HSS_PATRON	5	0.18%
RSS	RSS_JUV	5	0.18%
TFS	TFS_PATRON	5	0.18%
NRS	NRSCIRCJR	3	0.11%
	NRSCIRCM	3	0.11%
NLS	NLS_PATRON	2	0.07%
BWS	BWS_ADULT	1	0.04%
INS	INS_NONRES	1	0.04%

##### Library Items/Profiles at Your Library

Item Library	Trans Stat User Profile Name	Transactions	% of Total
<b>Total</b>		<b>2,719</b>	<b>100.00%</b>
NRS	NRS_ADULT	1,277	46.97%
	NRS_JUV	339	12.47%
	RSS_ADULT	253	9.30%
	OPS_PATRON	97	3.57%
	BYS_ADULT	59	2.17%
	FPS_ADULT	31	1.14%
BDD	NRS_ADULT	20	0.74%
NRS	BYS_JUV	18	0.66%
	SFS_ADULT	18	0.66%
INS	NRS_ADULT	15	0.55%
NRS	BFS_PATRON	15	0.55%
ESS	NRS_ADULT	14	0.51%
NRS	GHS_PATRON	14	0.51%
OPS	NRS_ADULT	14	0.51%
SCD	NRS_ADULT	14	0.51%
NRS	CIS_ADULT	13	0.48%
ADD	NRS_ADULT	11	0.40%
BKS	NRS_ADULT	11	0.40%
NRS	LYS_ADULT	11	0.40%
WRS	NRS_ADULT	11	0.40%
NRS	EPS_PATRON	10	0.37%
FMS	NRS_ADULT	9	0.33%
GED	NRS_ADULT	9	0.33%
NRS	BRS_ADULT	9	0.33%
	CHICAGO_P	9	0.33%
	WCS_PATRON	9	0.33%
OLS	NRS_ADULT	9	0.33%
TFS	NRS ADULT	9	0.33%

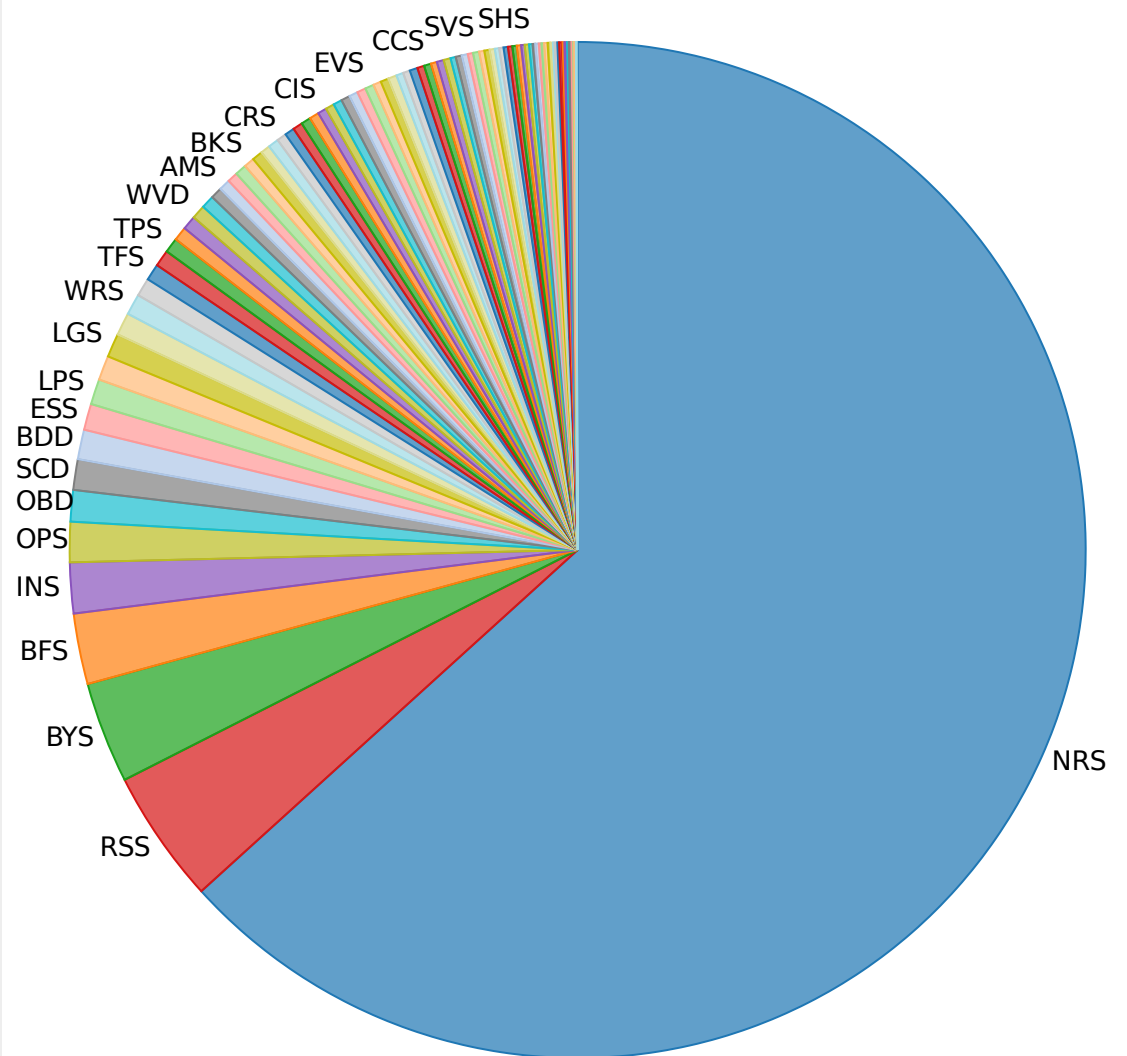
### User Library

NRS

### Checkouts & Renewals from Your Patrons

Item Library	Transactions	% of Total
<b>Total</b>	<b>4,276</b>	<b>100.00%</b>
NRS	2,704	63.24%
RSS	182	4.26%
BYS	138	3.23%
BFS	96	2.25%
INS	69	1.61%
OPS	55	1.29%
OBD	42	0.98%
SCD	42	0.98%
BDD	40	0.94%
ESS	36	0.84%
LPS	35	0.82%
DGS	33	0.77%
LGS	32	0.75%
RFS	31	0.72%
WRS	28	0.65%
OLS	25	0.58%
TFS	23	0.54%
ADD	22	0.51%
TPS	21	0.49%
BLD	19	0.44%
VPD	19	0.44%
WVD	19	0.44%
GED	17	0.40%

Your Users Checkout Items from...



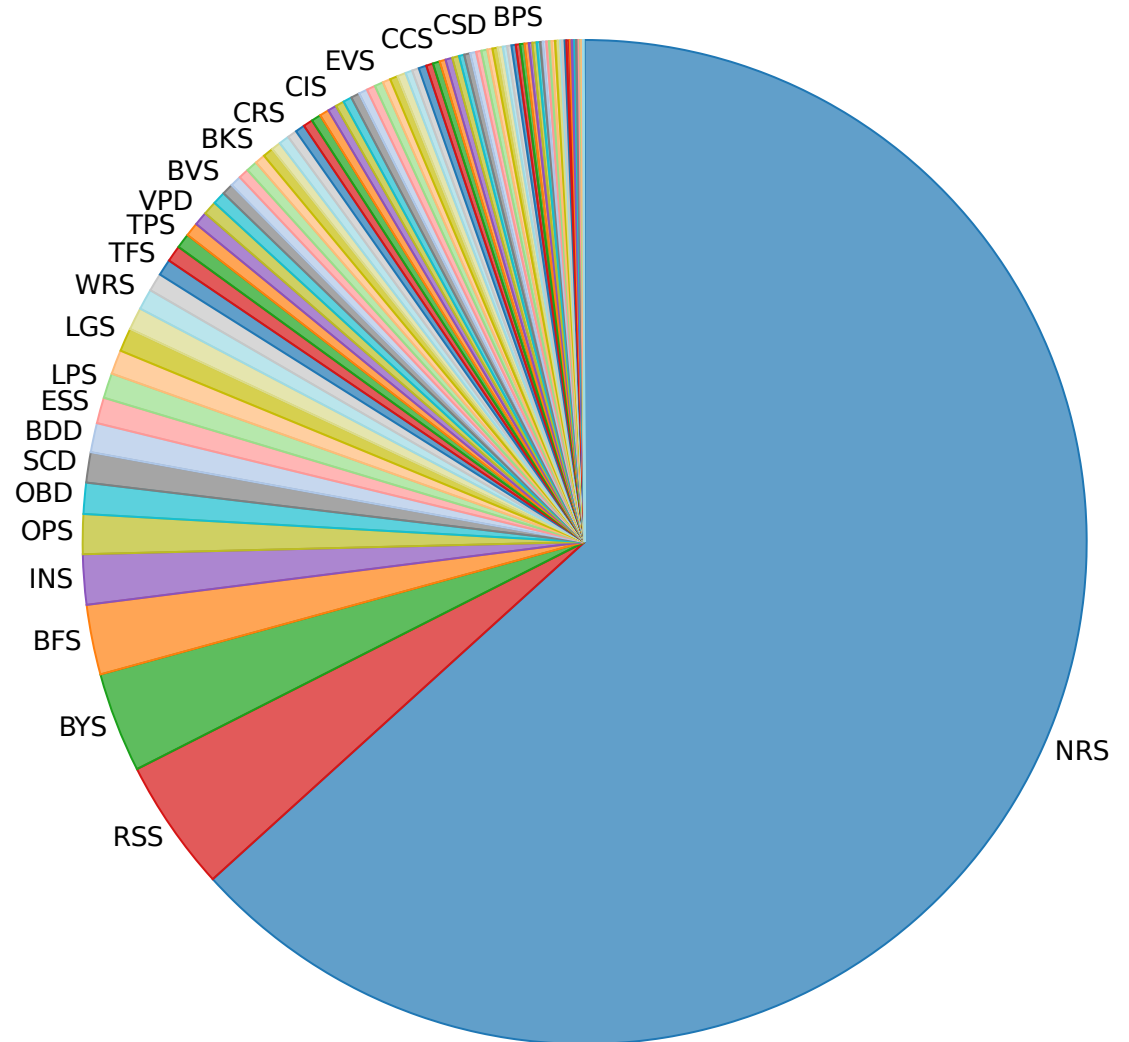
## User Library

NRS

### Checkouts & Renewals from Your Patrons

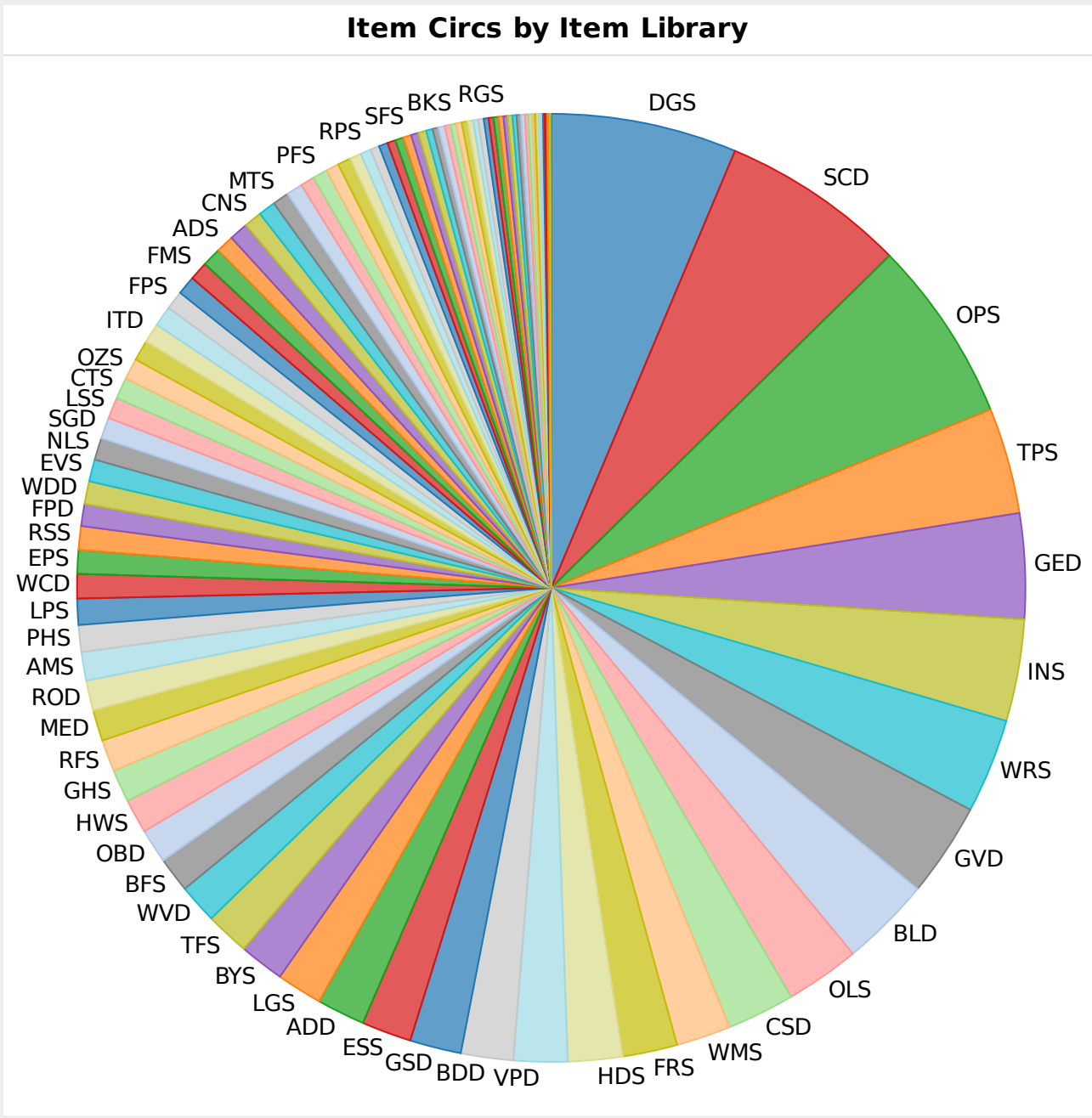
Station Library	Transactions	% of Total
<b>Total</b>	<b>4,276</b>	<b>100.00%</b>
NRS	3,569	83.47%
RSS	200	4.68%
BYS	148	3.46%
BFS	104	2.43%
INS	36	0.84%
LPS	35	0.82%
OBD	27	0.63%
OPS	26	0.61%
LGS	25	0.58%
RFS	23	0.54%
DGS	13	0.30%
BRS	12	0.28%
OES	12	0.28%
HDS	11	0.26%
BVS	8	0.19%
FPS	7	0.16%
WRS	5	0.12%
WCS	4	0.09%
CRS	2	0.05%
GED	2	0.05%
VPD	2	0.05%
BWS	1	0.02%
CIS	1	0.02%

### Your Users Checkout at...



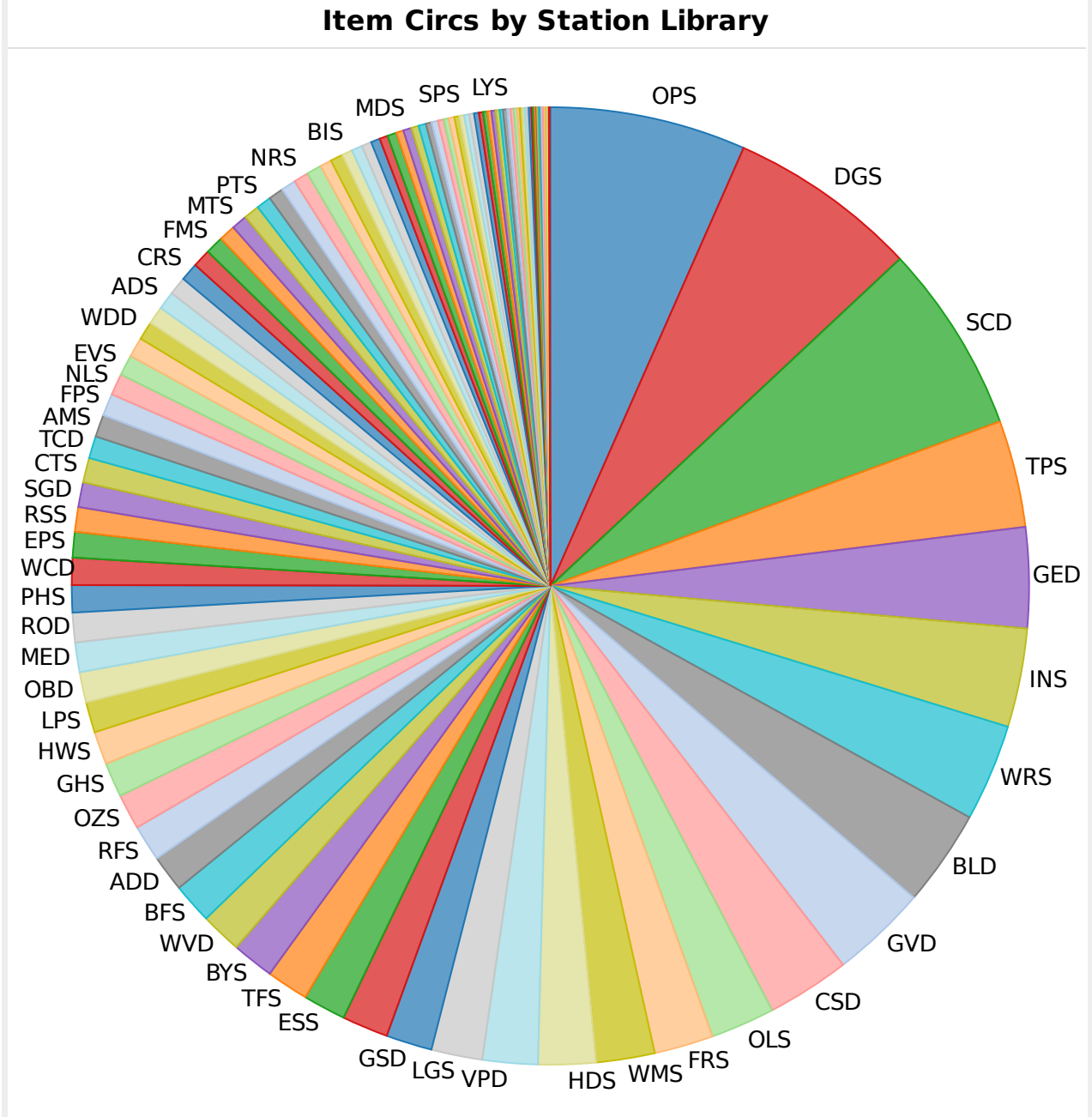
## Checkouts & Renewals from all SWAN Libraries

Item Library	Transactions	% of Total
<b>Total</b>	<b>933,208</b>	<b>100.00%</b>
DGS	58,888	6.31%
SCD	58,727	6.29%
OPS	58,051	6.22%
TPS	33,785	3.62%
GED	33,486	3.59%
INS	32,342	3.47%
WRS	30,078	3.22%
GVD	29,862	3.20%
BLD	28,809	3.09%
OLS	23,387	2.51%
CSD	21,598	2.31%
WMS	17,427	1.87%
FRS	17,361	1.86%
HDS	17,295	1.85%
VPD	17,060	1.83%
BDD	16,708	1.79%
GSD	16,375	1.75%
ESS	15,887	1.70%
ADD	15,195	1.63%
LGS	14,589	1.56%
BYS	14,066	1.51%
TFS	14,063	1.51%
WVD	12,522	1.34%
BFS	11,052	1.18%
OBD	10,972	1.18%
HWS	10,842	1.16%
GHS	10,405	1.11%
RFS	10,039	1.08%
MED	9,928	1.06%
ROD	9,496	1.02%
AMS	9,124	0.98%
PHS	8,555	0.92%
IDS	8,228	0.88%



## Checkouts & Renewals from all SWAN Libraries

Station Library	Transactions	% of Total
<b>Total</b>	<b>933,208</b>	<b>100.00%</b>
OPS	61,443	6.58%
DGS	59,911	6.42%
SCD	59,469	6.37%
TPS	33,710	3.61%
GED	31,817	3.41%
INS	30,945	3.32%
WRS	30,613	3.28%
BLD	30,433	3.26%
GVD	30,201	3.24%
CSD	26,321	2.82%
OLS	20,138	2.16%
FRS	18,783	2.01%
WMS	18,419	1.97%
HDS	18,052	1.93%
VPD	17,414	1.87%
LGS	16,020	1.72%
GSD	14,512	1.56%
BDD	14,382	1.54%
ESS	13,489	1.45%
TFS	13,383	1.43%
BYS	13,130	1.41%
WVD	12,970	1.39%
BFS	12,631	1.35%
ADD	11,438	1.23%
RFS	11,413	1.22%
OZS	11,323	1.21%
GHS	10,647	1.14%
HWS	10,466	1.12%
LPS	9,634	1.03%
OBD	9,589	1.03%
MED	9,337	1.00%
ROD	9,299	1.00%
BUC	8,654	0.93%



## Checkouts & Renewals from all SWAN Libraries

User Library	Transactions	% of Total
<b>Total</b>	<b>933,208</b>	<b>100.00%</b>
SCD	60,229	6.45%
DGS	59,564	6.38%
OPS	58,451	6.26%
GVD	32,810	3.52%
GED	32,473	3.48%
ILL_LIBS	31,997	3.43%
INS	31,733	3.40%
TPS	31,362	3.36%
BLD	27,652	2.96%
WRS	27,456	2.94%
CSD	25,784	2.76%
WMS	18,352	1.97%
FRS	18,089	1.94%
OLS	17,475	1.87%
VPD	16,921	1.81%
HDS	16,492	1.77%
GSD	14,963	1.60%
LGS	13,903	1.49%
TFS	13,536	1.45%
BYS	13,389	1.43%
BFS	13,265	1.42%
BVD	13,019	1.40%
BDD	12,856	1.38%
WVD	11,739	1.26%
RFS	10,940	1.17%
ADD	10,810	1.16%
GHS	10,621	1.14%
WCD	9,970	1.07%
LPS	9,938	1.06%
ROD	9,893	1.06%
OZS	9,808	1.05%
HWS	9,782	1.05%
MED	0,186	0.02%

