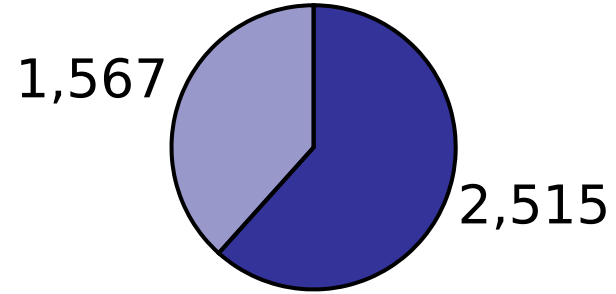


### Item Library

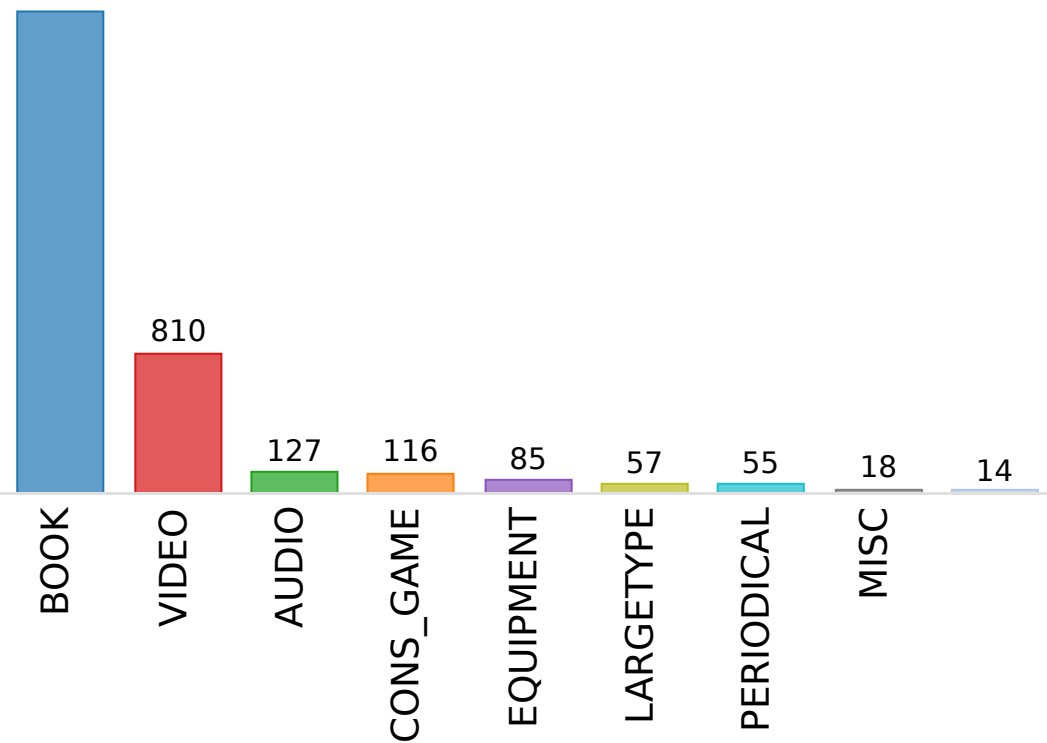
NRS

### Checkouts & Renewals of Your Items

Trans Stat Command Desc	Transactions	% of Total
<b>Total</b>	<b>4,082</b>	<b>100.00%</b>
Charge Item Part B	2,515	61.61%
Renew Item	1,567	38.39%



Item Cat1	Transactions	% of Total
<b>Total</b>	<b>4,082</b>	<b>100.00%</b>
BOOK	2,800	68.59%
VIDEO	810	19.84%
AUDIO	127	3.11%
CONS_GAME	116	2.84%
EQUIPMENT	85	2.08%
LARGETYPE	57	1.40%
PERIODICAL	55	1.35%
MISC	18	0.44%
	14	0.34%



### Item Library

NRS

### Checkouts & Renewals of Your Items

Item Type	Transactions	% of Total
<b>Total</b>	<b>4,082</b>	<b>100.00%</b>
<b>BOOK</b>	2,308	56.54%
<b>BOOK_NEW</b>	485	11.88%
<b>DVD_FEAT</b>	483	11.83%
<b>DVD_NEWFEA</b>	104	2.55%
<b>CONSOLEGAM</b>	87	2.13%
<b>DVD_BOXSET</b>	81	1.98%
<b>CD_AUDIO</b>	77	1.89%
<b>EQUIPMENTC</b>	66	1.62%
<b>PERIODICAL</b>	55	1.35%
<b>DVD</b>	47	1.15%
<b>BLURAY_FEA</b>	45	1.10%
<b>LARGETYPE</b>	45	1.10%
<b>CD_SPOKEN</b>	34	0.83%
<b>CONSOLENEW</b>	30	0.73%
<b>BLURAY_NFE</b>	29	0.71%
<b>EQUIPMENT</b>	19	0.47%
<b>REALIA</b>	18	0.44%
<b>DVD_NEWFEJ</b>	15	0.37%
<b>PAPERBACK</b>	15	0.37%
<b>LARGETYPEN</b>	12	0.29%
<b>CD_NEW</b>	8	0.20%
<b>CD_SPOKNEW</b>	8	0.20%
<b>NS_ILL_VID</b>	4	0.10%
<b>DVD_NEW</b>	3	0.07%
<b>DVD_BOXNEW</b>	2	0.05%
<b>NS_ILL_PRT</b>	2	0.05%

Item Home Location	Transactions	% of Total
<b>Total</b>	<b>4,082</b>	<b>100.00%</b>
<b>STACKS</b>	1,671	40.94%
<b>STACKS_JUV</b>	1,495	36.62%
<b>NEW_ADULT</b>	482	11.81%
<b>YOUNGADULT</b>	220	5.39%
<b>NEW_JUV</b>	160	3.92%
<b>NEW_YA</b>	47	1.15%
<b>ILL_IN</b>	6	0.15%
<b>ON-ORDER</b>	1	0.02%

### Item Library

NRS

### Checkouts & Renewals of Your Items

User Library	Trans Stat User Profile Name	Transactions	% of Total
<b>Total</b>		<b>4,082</b>	<b>100.00%</b>
		1,424	34.88%
<b>NRS</b>	<b>NRS_ADULT</b>	1,413	34.62%
	<b>NRS_JUV</b>	239	5.85%
<b>RSS</b>	<b>RSS_ADULT</b>	105	2.57%
<b>BYS</b>	<b>BYS_ADULT</b>	61	1.49%
<b>NRS</b>	<b>CHICAGO_P</b>	52	1.27%
<b>BFS</b>	<b>BFS_PATRON</b>	38	0.93%
<b>DGS</b>	<b>DGS_PATRON</b>	30	0.73%
<b>FPS</b>	<b>FPS_ADULT</b>	29	0.71%
<b>MWS</b>	<b>MWS_ADULT</b>	27	0.66%
<b>GED</b>	<b>GED_PATRON</b>	22	0.54%
<b>INS</b>	<b>INS_PATRON</b>	22	0.54%
<b>LPS</b>	<b>LPS_PATRON</b>	22	0.54%
<b>GVD</b>	<b>GVD_PATRON</b>	21	0.51%
<b>SCD</b>	<b>SCD_PATRON</b>	21	0.51%
<b>CSD</b>	<b>CSD_PATRON</b>	20	0.49%
<b>OPS</b>	<b>OPS_PATRON</b>	20	0.49%
<b>VPD</b>	<b>VPD_PATRON</b>	19	0.47%
<b>BRS</b>	<b>BRS_ADULT</b>	18	0.44%
<b>ILL_LIBS</b>	<b>CHICAGO_P</b>	18	0.44%
<b>SFS</b>	<b>SFS_ADULT</b>	18	0.44%
<b>RFS</b>	<b>RFS_JUV</b>	17	0.42%
<b>EPS</b>	<b>EPS_PATRON</b>	15	0.37%
<b>WCS</b>	<b>WCS_PATRON</b>	15	0.37%
<b>BLD</b>	<b>BLD_PATRON</b>	14	0.34%
<b>RFS</b>	<b>RFS_ADULT</b>	13	0.32%
<b>TPS</b>	<b>TPS_PATRON</b>	13	0.32%

### Item Library

NRS

### Checkouts & Renewals of Your Items

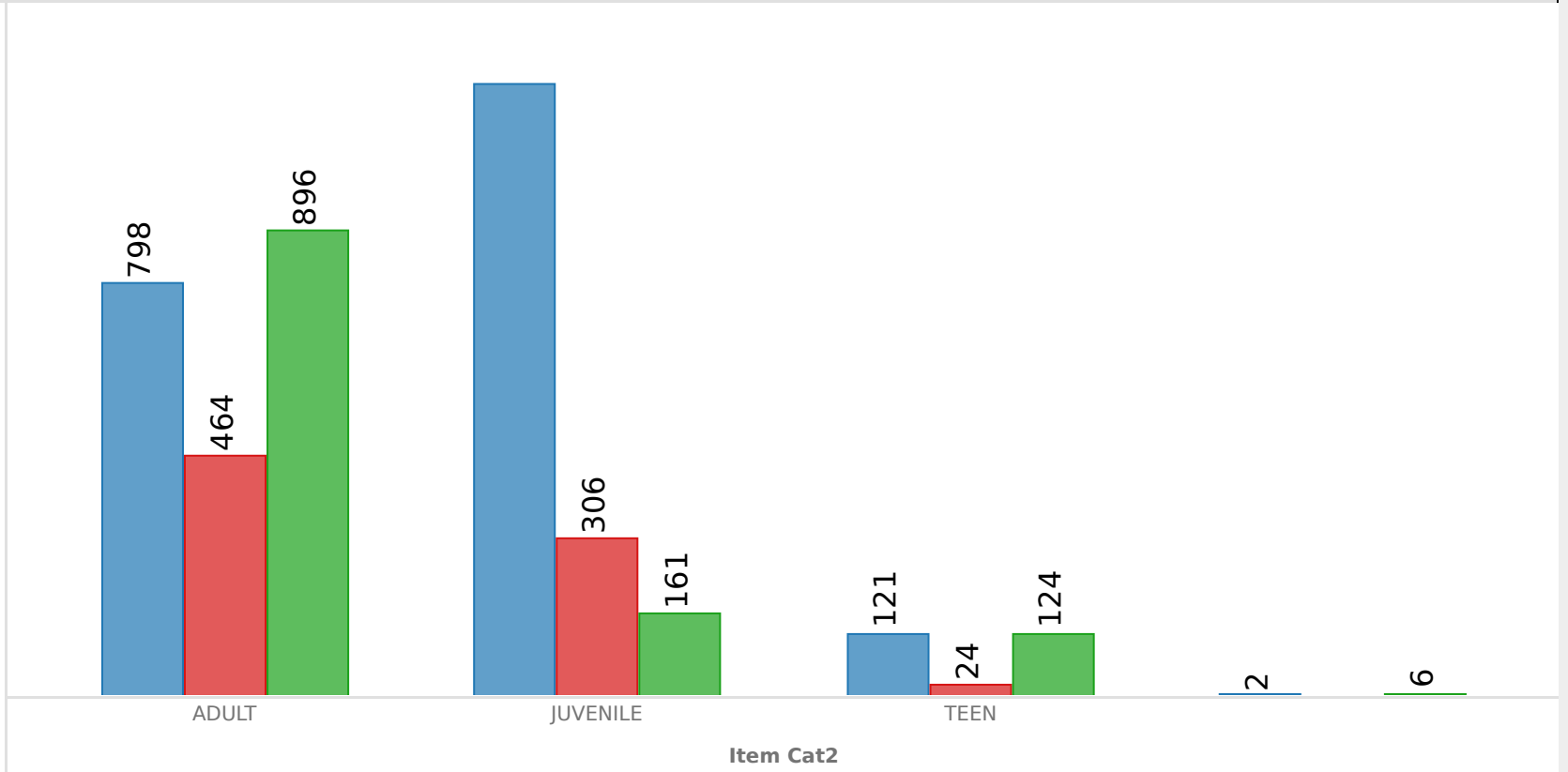
Item Cat2	Transactions	% of Total
ADULT	2,158	52.87%
JUVENILE	1,647	40.35%
TEEN	269	6.59%
	8	0.20%
<b>Total</b>	<b>4,082</b>	<b>100.00%</b>

Item Cat3	Transactions	% of Total
FICTION	2,101	51.47%
NONFICTION	794	19.45%
	1,187	29.08%
<b>Total</b>	<b>4,082</b>	<b>100.00%</b>

### Circs by Cat2 & Cat3

Item Cat3

- FICTION
- NONFICTION
- 

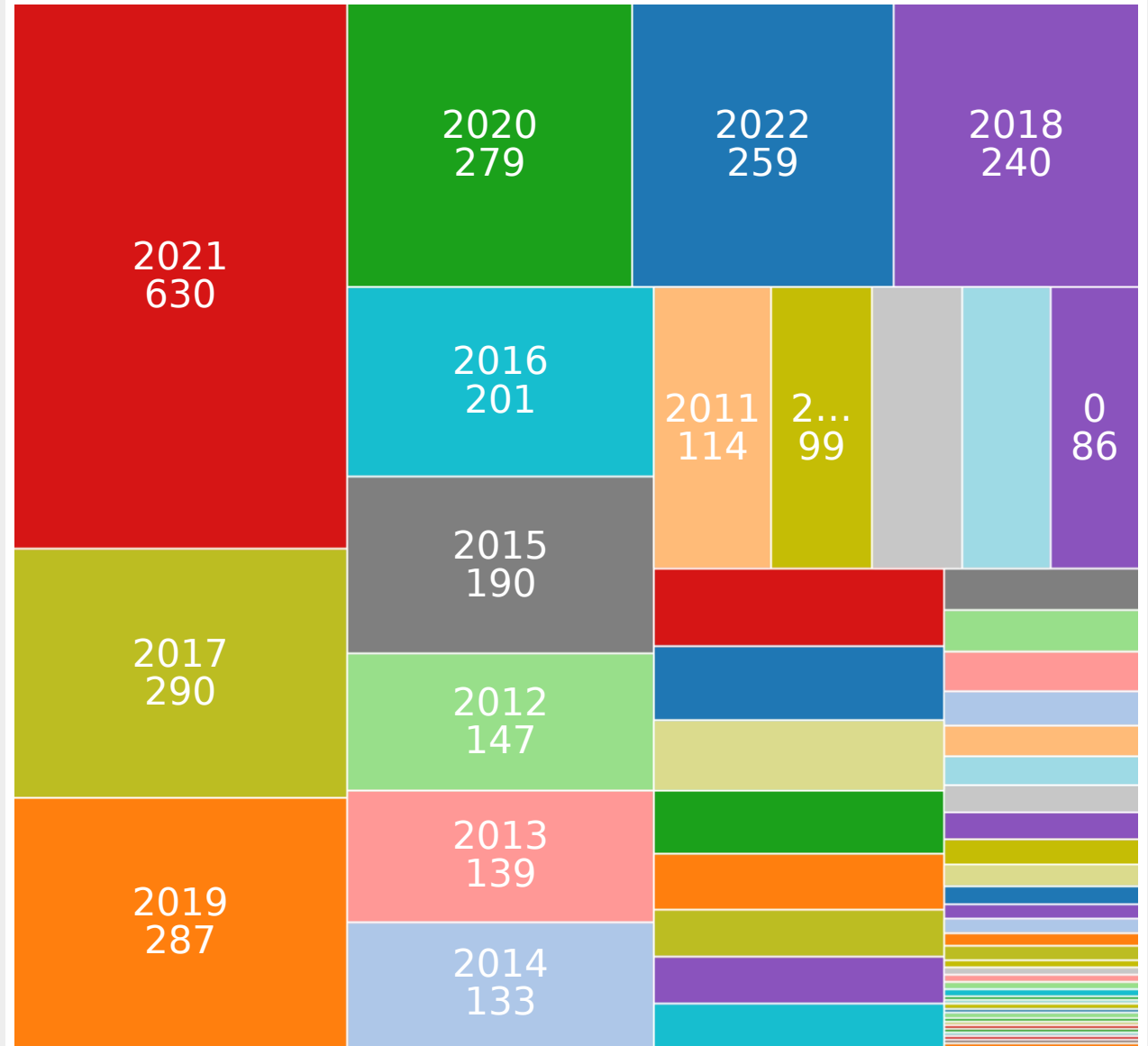


### Item Library

NRS

### Checkouts & Renewals of Your Items

Publication Year	Transactions	% of Total
<b>Total</b>	<b>4,082</b>	<b>100.00%</b>
2021	630	15.43%
2017	290	7.10%
2019	287	7.03%
2020	279	6.83%
2022	259	6.34%
2018	240	5.88%
2016	201	4.92%
2015	190	4.65%
2012	147	3.60%
2013	139	3.41%
2014	133	3.26%
2011	114	2.79%
2010	99	2.43%
2007	87	2.13%
2000	86	2.11%
2008	86	2.11%
2005	78	1.91%
2006	73	1.79%
2009	71	1.74%
2004	64	1.57%
2003	56	1.37%
2001	48	1.18%
2002	47	1.15%
2000	43	1.05%
1996	28	0.69%
1999	28	0.69%
1997	26	0.64%
1998	24	0.59%
1995	21	0.51%
1992	19	0.47%



### Station Library

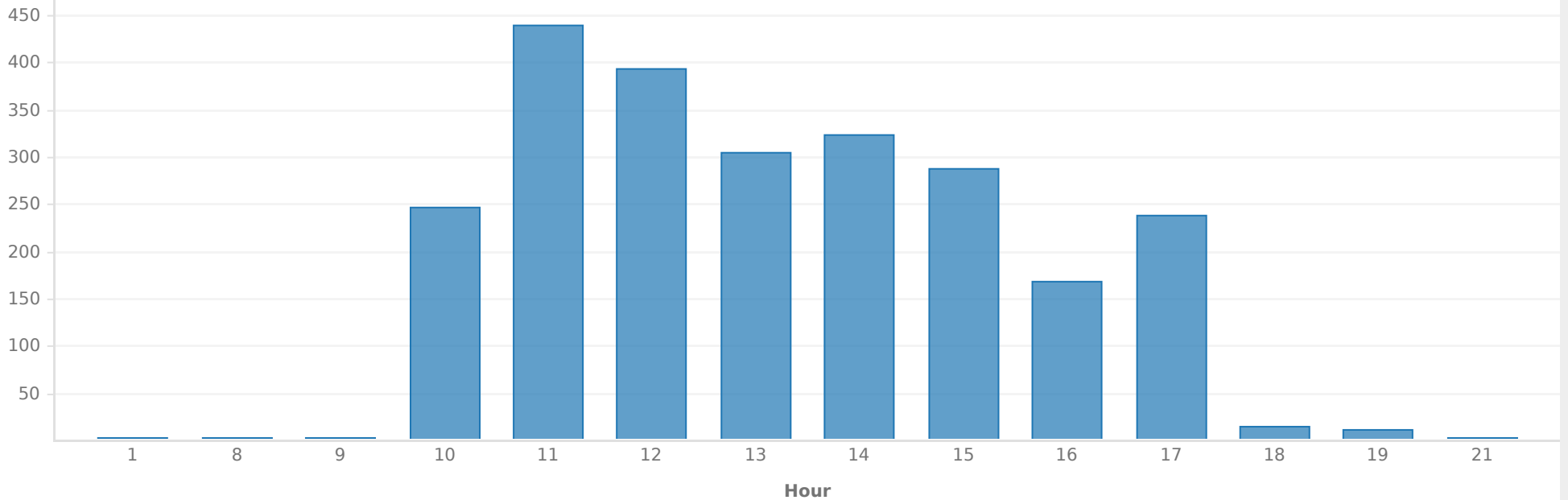
NRS

### Checkouts & Renewals at Your Library

Trans Stat Command Desc	Transactions	% of Total
<b>Total</b>	<b>3,877</b>	<b>100.00%</b>
Charge Item Part B	2,355	60.74%
Renew Item	1,522	39.26%

Trans Stat Station Login User Access	Transactions	% of Total
<b>Total</b>	<b>3,877</b>	<b>100.00%</b>
NRSCIRCSR	1,804	46.53%
AUTORENEW	1,375	35.47%
NRSTECHSR	619	15.97%
OFFLINE	62	1.60%
PUBLIC	17	0.44%

### Average Transactions per Hour



### Station Library

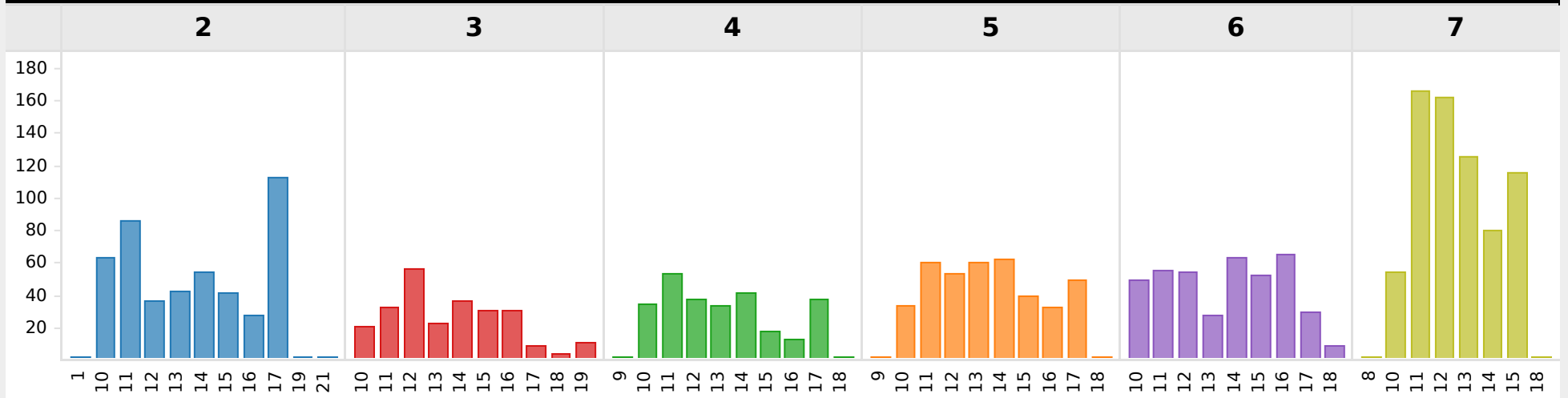
NRS

### Checkouts & Renewals at Your Library

Trans Stat Dow	Transactions	% of Total
Monday	469	18.75%
Tuesday	256	10.23%
Wednesday	273	10.91%
Thursday	393	15.71%
Friday	405	16.19%
Saturday	706	28.22%

Hour	Transactions	% of Total
8	1	0.04%
9	2	0.08%
10	256	10.24%
11	453	18.11%
12	400	15.99%
13	314	12.55%
14	338	13.51%
15	299	11.96%
16	170	6.80%
17	239	9.56%
18	16	0.64%
19	12	0.48%
21	1	0.04%

### Circs by Hour and Day



### Station Library

NRS

### Checkouts & Renewals at Your Library

#### Library Users at Your Library

User Library	Transactions	% of Total
<b>Total</b>	<b>2,502</b>	<b>100.00%</b>
NRS	2,111	84.37%
RSS	107	4.28%
BYS	55	2.20%
BFS	32	1.28%
MWS	32	1.28%
FPS	28	1.12%
LPS	23	0.92%
BRS	18	0.72%
SFS	17	0.68%
RFS	16	0.64%
ILL_LIBS	13	0.52%
LYS	10	0.40%
WCS	10	0.40%
CIS	9	0.36%
EPS	9	0.36%
OPS	4	0.16%
BIS	3	0.12%
LGS	2	0.08%
OES	2	0.08%
WRS	1	0.04%

#### Library Items at Your Library

Item Library	Transactions	% of Total
<b>Total</b>	<b>2,502</b>	<b>100.00%</b>
NRS	2,089	83.49%
BYS	22	0.88%
ESS	19	0.76%
OPS	19	0.76%
BLD	18	0.72%
SCD	16	0.64%
DGS	15	0.60%
OBD	14	0.56%
WVD	13	0.52%
WRS	11	0.44%
BIS	10	0.40%
GED	10	0.40%
AMS	9	0.36%
BDD	9	0.36%
TPS	9	0.36%
GVD	8	0.32%
INS	8	0.32%
TFS	8	0.32%
LGS	7	0.28%
NLS	7	0.28%
OLS	7	0.28%
ADS	6	0.24%
BKS	6	0.24%
WMS	6	0.24%



### Station Library

NRS

#### Checkouts & Renewals by Library & User Profile at Your Library

##### Library Users/Profiles at Your Library

User Library	Trans Stat User Profile Name	Transactions	% of Total
<b>Total</b>		<b>2,502</b>	<b>100.00%</b>
NRS	NRS_ADULT	1,786	71.38%
	NRS_JUV	254	10.15%
RSS	RSS_ADULT	102	4.08%
BYS	BYS_ADULT	55	2.20%
NRS	CHICAGO_P	53	2.12%
BFS	BFS_PATRON	32	1.28%
MWS	MWS_ADULT	32	1.28%
FPS	FPS_ADULT	28	1.12%
LPS	LPS_PATRON	23	0.92%
BRS	BRS_ADULT	18	0.72%
SFS	SFS_ADULT	17	0.68%
RFS	RFS_JUV	16	0.64%
ILL_LIBS	CHICAGO_P	12	0.48%
LYS	LYS_ADULT	10	0.40%
WCS	WCS_PATRON	10	0.40%
CIS	CIS_ADULT	9	0.36%
EPS	EPS_PATRON	9	0.36%
NRS	NRSCIRCJR	9	0.36%
	NRSCIRCSR	5	0.20%
RSS	RSS_JUV	5	0.20%
NRS	BYS_ADULT	4	0.16%
OPS	OPS_PATRON	4	0.16%
BIS	BIS_ADULT	3	0.12%
LGS	LGS_PATRON	2	0.08%
OES	OPS_PATRON	2	0.08%
ILL_LIBS	INTACC_MED	1	0.04%
WRS	WRS_PATRON	1	0.04%

##### Library Items/Profiles at Your Library

Item Library	Trans Stat User Profile Name	Transactions	% of Total
<b>Total</b>		<b>2,502</b>	<b>100.00%</b>
NRS	NRS_ADULT	1,411	56.39%
	NRS_JUV	239	9.55%
	RSS_ADULT	102	4.08%
	CHICAGO_P	64	2.56%
	BYS_ADULT	58	2.32%
	BFS_PATRON	30	1.20%
	MWS_ADULT	27	1.08%
	FPS_ADULT	22	0.88%
ESS	NRS_ADULT	19	0.76%
NRS	BRS_ADULT	18	0.72%
OPS	NRS_ADULT	18	0.72%
BLD	NRS_ADULT	17	0.68%
NRS	SFS_ADULT	17	0.68%
	LPS_PATRON	16	0.64%
	RFS_JUV	16	0.64%
SCD	NRS_ADULT	16	0.64%
DGS	NRS_ADULT	15	0.60%
OBD	NRS_ADULT	13	0.52%
WVD	NRS_ADULT	12	0.48%
BYS	NRS_JUV	11	0.44%
WRS	NRS_ADULT	11	0.44%
BIS	NRS_ADULT	10	0.40%
BYS	NRS_ADULT	10	0.40%
GED	NRS_ADULT	10	0.40%
NRS	LYS_ADULT	10	0.40%
	WCS_PATRON	10	0.40%
	CIS_ADULT	9	0.36%
	EPS_PATRON	9	0.36%
	NRSCIRCJR	9	0.36%

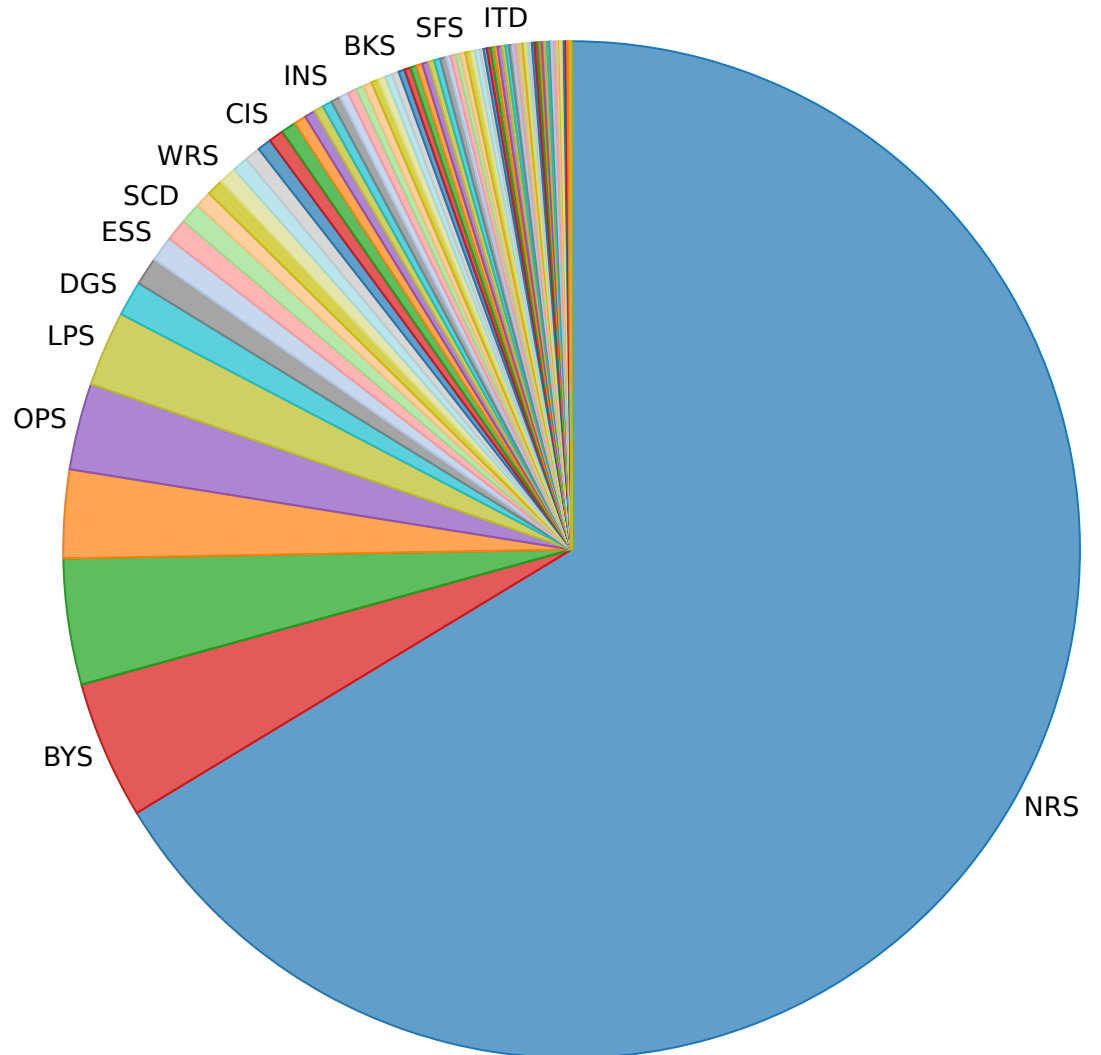
**User Library**

NRS

**Checkouts & Renewals from Your Patrons**

Item Library	Transactions	% of Total
<b>Total</b>	<b>2,597</b>	<b>100.00%</b>
NRS	1,722	66.31%
BYS	114	4.39%
RSS	104	4.00%
BFS	73	2.81%
OPS	71	2.73%
LPS	62	2.39%
DGS	29	1.12%
FPS	23	0.89%
ESS	21	0.81%
BLD	18	0.69%
SCD	17	0.65%
GED	14	0.54%
WCS	14	0.54%
WRS	14	0.54%
LGS	13	0.50%
OBD	13	0.50%
BIS	12	0.46%
CIS	12	0.46%
WVD	12	0.46%
AMS	10	0.39%
TFS	9	0.35%
BDD	8	0.31%
GVD	8	0.31%
INS	8	0.31%
NLC	7	0.27%

**Your Users Checkout Items from...**



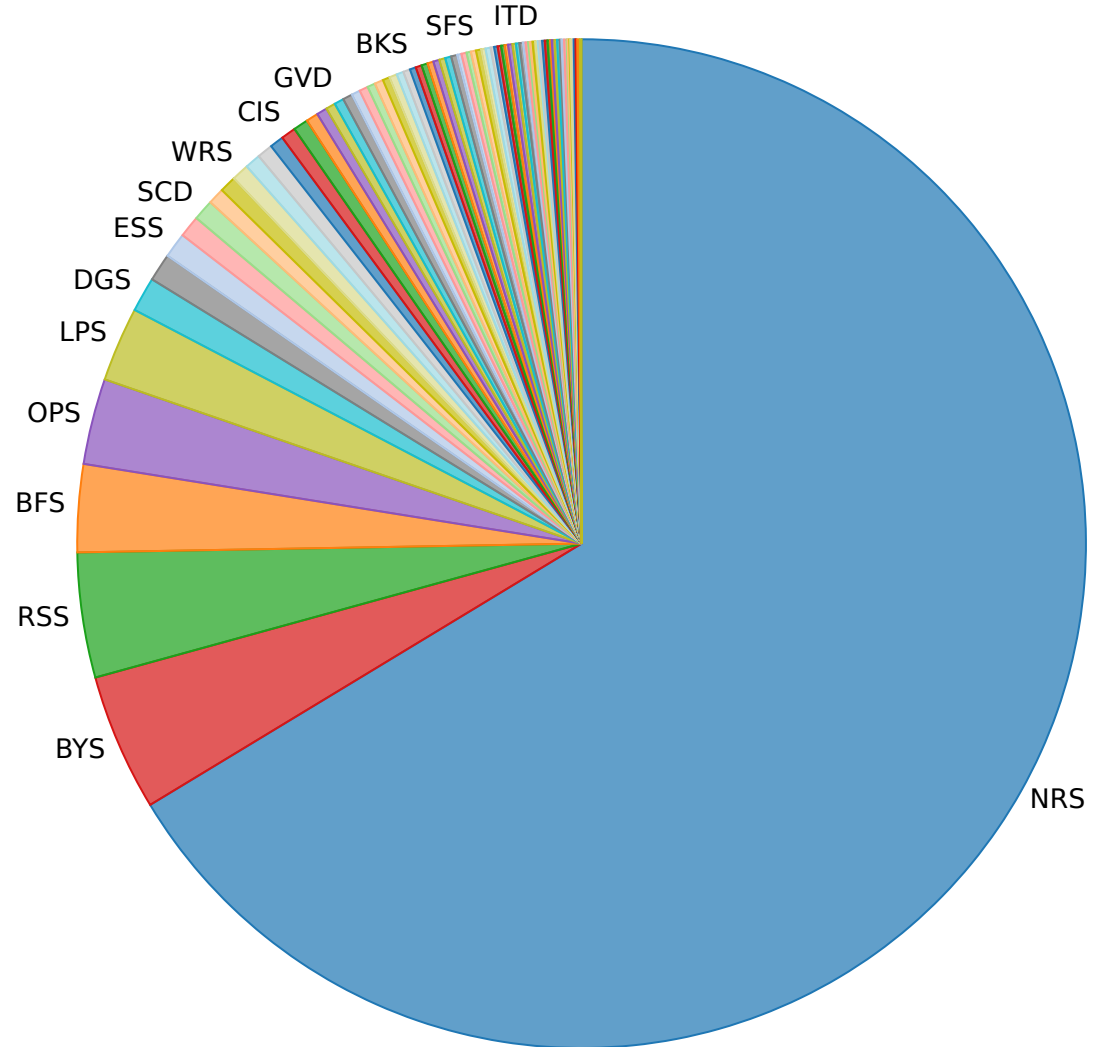
### User Library

NRS

### Checkouts & Renewals from Your Patrons

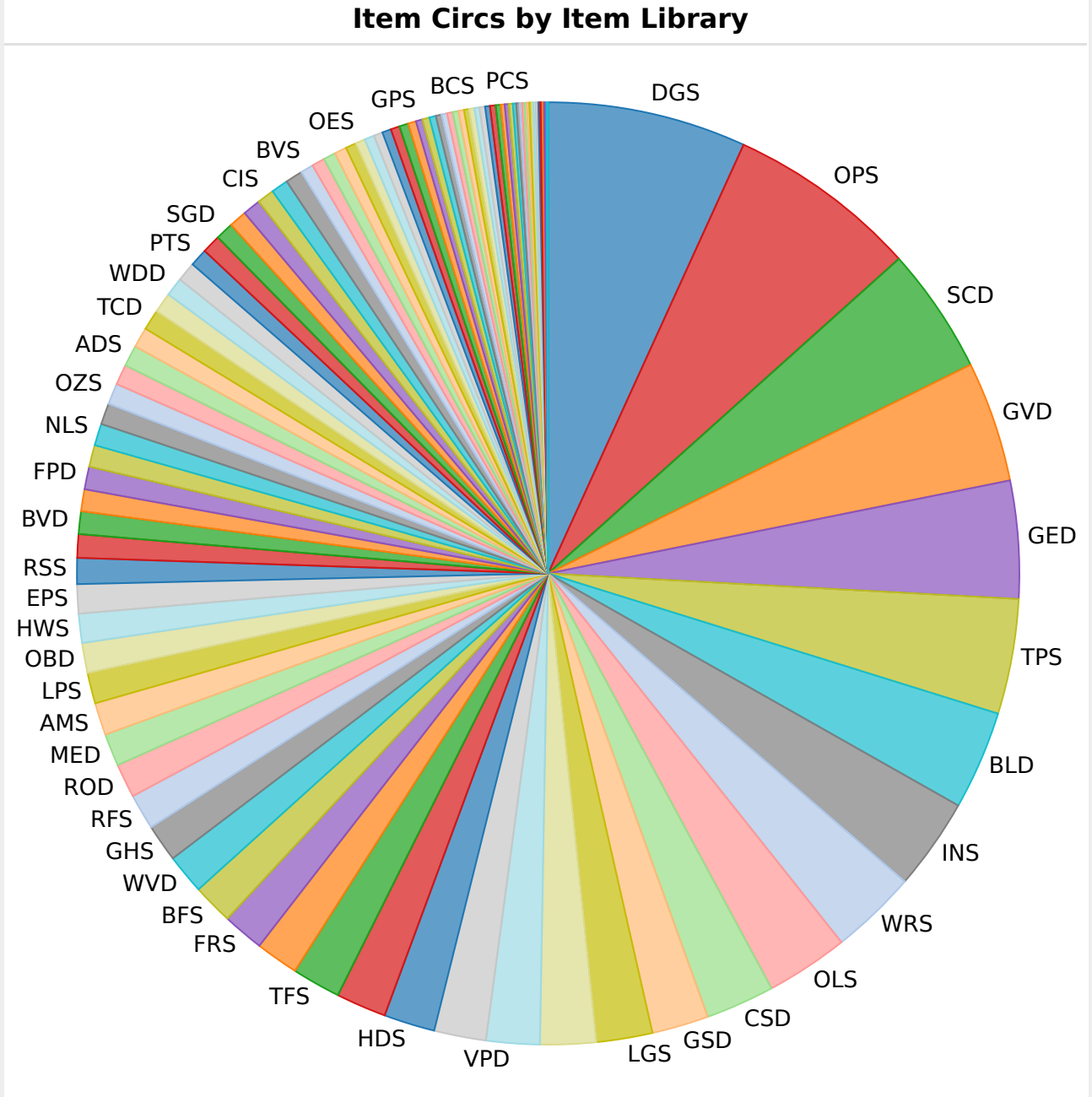
Station Library	Transaction	% of Total
<b>Total</b>	<b>2,597</b>	<b>100.00%</b>
NRS	2,111	81.29%
RSS	105	4.04%
BYS	100	3.85%
BFS	85	3.27%
LPS	69	2.66%
OPS	56	2.16%
FPS	17	0.65%
WCS	13	0.50%
DGS	11	0.42%
CIS	10	0.39%
LGS	7	0.27%
WRS	3	0.12%
BVS	2	0.08%
SFS	2	0.08%
VPD	2	0.08%
HKS	1	0.04%
LYS	1	0.04%
OZS	1	0.04%
SWS	1	0.04%

### Your Users Checkout at...



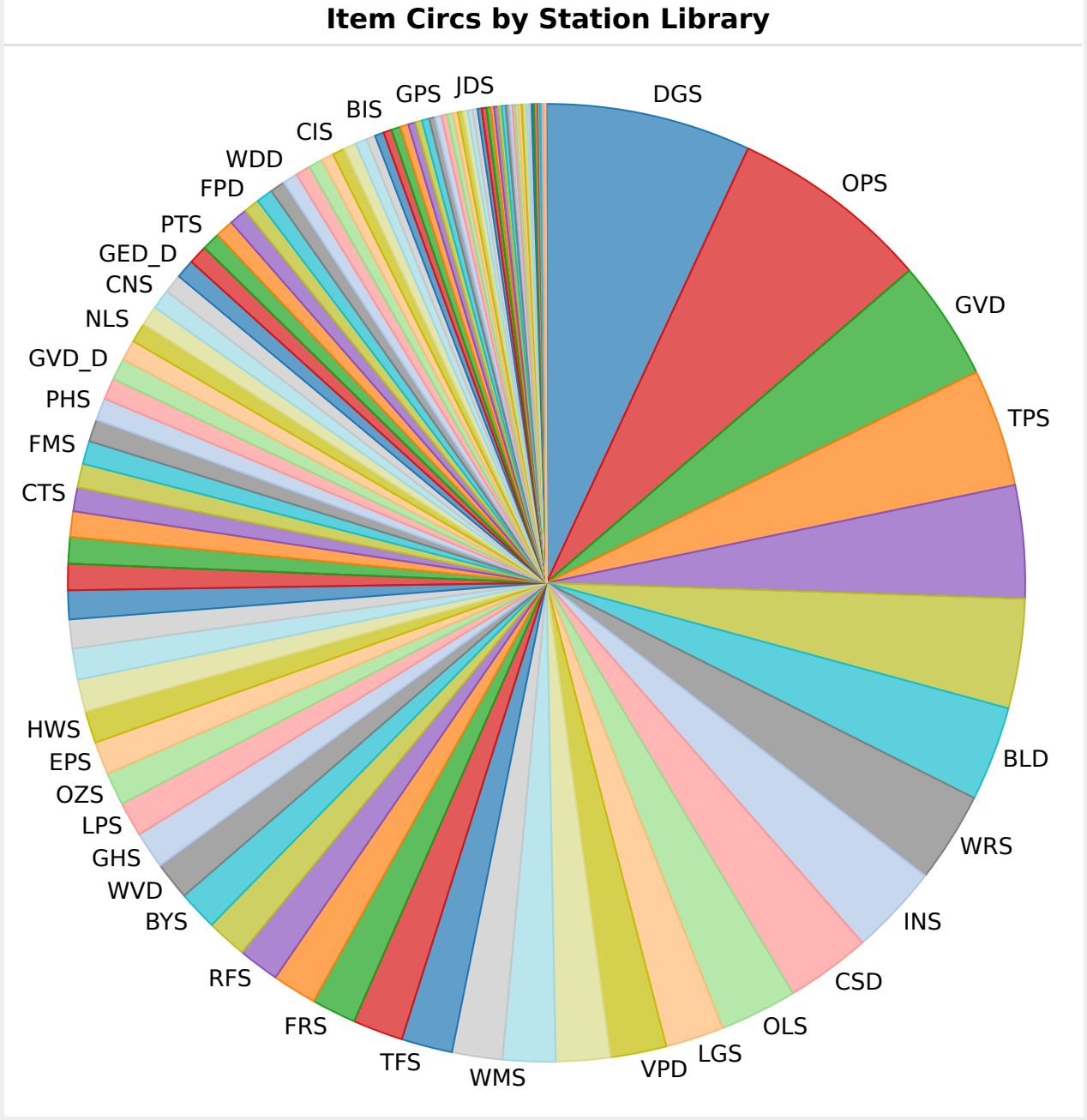
**Checkouts & Renewals from all SWAN Libraries**

Item Library	Transactions	% of Total
<b>Total</b>	<b>948,935</b>	<b>100.00%</b>
DGS	64,233	6.77%
OPS	62,297	6.56%
SCD	41,229	4.34%
GVD	39,178	4.13%
GED	38,262	4.03%
TPS	37,276	3.93%
BLD	32,127	3.39%
INS	29,855	3.15%
WRS	28,239	2.98%
OLS	27,003	2.85%
CSD	22,323	2.35%
GSD	18,442	1.94%
LGS	18,255	1.92%
BDD	18,188	1.92%
VPD	17,442	1.84%
ESS	16,821	1.77%
HDS	16,456	1.73%
WMS	16,299	1.72%
TFS	15,888	1.67%
BYS	14,014	1.48%
FRS	13,422	1.41%
BFS	13,094	1.38%
WVD	12,991	1.37%
GHS	12,113	1.28%
RFS	11,563	1.22%
ROD	11,285	1.19%
MED	10,531	1.11%
AMS	10,481	1.10%
LPS	9,986	1.05%
OBD	9,692	1.02%
HWS	9,572	1.01%
EPS	9,560	1.01%
RSS	8,243	0.87%
WCD	7,731	0.81%



**Checkouts & Renewals from all SWAN Libraries**

Station Library	Transactions	% of Total
<b>Total</b>	<b>948,935</b>	<b>100.00%</b>
DGS	65,308	6.88%
OPS	64,481	6.80%
GVD	38,453	4.05%
TPS	37,606	3.96%
GED	36,044	3.80%
SCD	35,077	3.70%
BLD	30,270	3.19%
WRS	29,126	3.07%
INS	29,006	3.06%
CSD	27,090	2.85%
OLS	24,938	2.63%
LGS	18,690	1.97%
VPD	17,815	1.88%
HDS	17,432	1.84%
WMS	16,760	1.77%
BDD	16,289	1.72%
TFS	16,177	1.70%
GSD	16,145	1.70%
FRS	14,265	1.50%
BFS	14,248	1.50%
RFS	13,107	1.38%
ESS	12,833	1.35%
BYS	12,636	1.33%
WVD	12,227	1.29%
GHS	11,878	1.25%
LPS	11,037	1.16%
OZS	10,654	1.12%
EPS	10,497	1.11%
HWS	10,234	1.08%
SCD_D	10,224	1.08%
ROD	9,961	1.05%
MED	9,371	0.99%
WCD	9,177	0.97%
RSS	8,549	0.90%



## Checkouts & Renewals from all SWAN Libraries

User Library	Transactions	% of Total
<b>Total</b>	<b>948,935</b>	<b>100.00%</b>
	342,895	36.13%
DGS	37,041	3.90%
OPS	29,639	3.12%
INS	28,432	3.00%
SCD	25,940	2.73%
GVD	24,061	2.54%
ILL_LIBS	21,796	2.30%
TPS	21,519	2.27%
GED	19,467	2.05%
BLD	17,933	1.89%
WRS	16,607	1.75%
FRS	13,961	1.47%
CSD	13,840	1.46%
OLS	13,217	1.39%
BVD	13,044	1.37%
VPD	11,151	1.18%
WMS	11,086	1.17%
TFS	10,882	1.15%
HDS	10,744	1.13%
LGS	10,061	1.06%
BFS	9,731	1.03%
GSD	9,099	0.96%
BDD	8,448	0.89%
ESS	8,300	0.87%
BYS	8,235	0.87%
WVD	8,082	0.85%
RFS	7,633	0.80%
LPS	7,243	0.76%
ROD	7,051	0.74%
GHS	6,891	0.73%
SGD	6,833	0.72%
MED	6,575	0.69%
HWS	6,508	0.69%
FPS	6,453	0.68%

